



Photos  
Photiades  
Homes

---

Value for Life

RESIDENTIAL PLOTS FOR SALE

**CAROLINA PARK | ILIOUPOLI | KALLITHEA**



For Sale

Carolina Park - Nicosia  
Plot 242

This plot of land, located in the area of Carolina Park, offers a unique opportunity for development. It is ideal for building a custom home. Carolina Park area offers green parks, pedestrian walkways and the serenity of a truly residential area



## Main Characteristics

PLOT AREA: **542m<sup>2</sup>**

USE: **Residential**

FRONTAGE: **23,8**

BUILDING COEFFICIENT: **90%**

TITLE DEEDS: 

**See on map** 



22452000 / 99403664

INFO@PHOTIADESHOMES.COM



For Sale

Carolina Park - Nicosia  
Plot 246

This plot of land, located in the area of Carolina Park, offers a unique opportunity for development. It is ideal for building a custom home. Carolina Park area offers green parks, pedestrian walkways and the serenity of a truly residential area



## Main Characteristics

PLOT AREA: **535m<sup>2</sup>**

USE: **Residential**

FRONTAGE: **Corner**

BUILDING COEFFICIENT: **90%**


TITLE DEEDS: 

**See on map** 



Photos  
Photiades  
Homes

Value for Life

 22452000 / 99403664

 [INFO@PHOTIADESHOMES.COM](mailto:INFO@PHOTIADESHOMES.COM)



For Sale

Carolina Park - Nicosia  
Plot 247

This plot of land, located in the area of Carolina Park, offers a unique opportunity for development. It is ideal for building a custom home. Carolina Park area offers green parks, pedestrian walkways and the serenity of a truly residential area



## Main Characteristics

PLOT AREA: **535m<sup>2</sup>**

USE: **Residential**

FRONTAGE: **Corner**

BUILDING COEFFICIENT: **90%**


TITLE DEEDS: 

**See on map** 



Photos  
Photiades  
Homes

Value for Life

 22452000 / 99403664

 [INFO@PHOTIADESHOMES.COM](mailto:INFO@PHOTIADESHOMES.COM)



For Sale

Carolina Park - Nicosia  
Plot 255

This plot of land, located in the area of Carolina Park, offers a unique opportunity for development. It is ideal for building a custom home. Carolina Park area offers green parks, pedestrian walkways and the serenity of a truly residential area



### Main Characteristics

PLOT AREA: **536m<sup>2</sup>**

USE: **Residential**

FRONTAGE: **23,73**

BUILDING COEFFICIENT: **90%**


TITLE DEEDS: 

**See on map** 



Photos  
Photiades  
Homes

Value for Life

 22452000 / 99403664

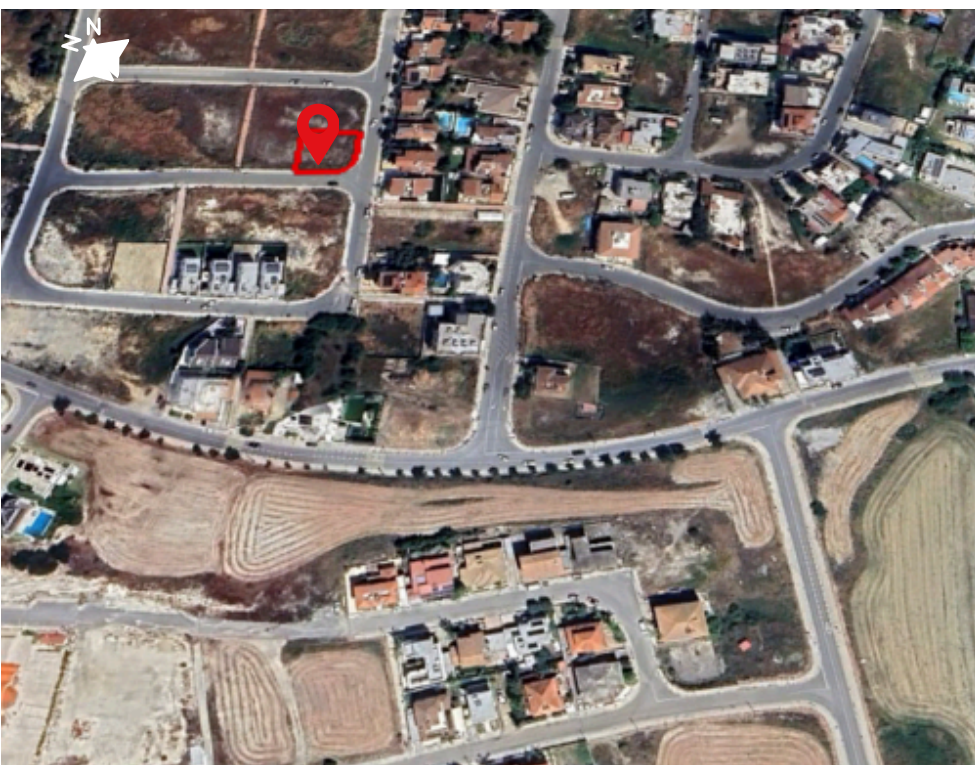
 [INFO@PHOTIADESHOMES.COM](mailto:INFO@PHOTIADESHOMES.COM)



For Sale  
€161,000 +VAT

Carolina Park - Nicosia  
Plot 256

This plot of land, located in the area of Carolina Park, offers a unique opportunity for development. It is ideal for building a custom home. Carolina Park area offers green parks, pedestrian walkways and the serenity of a truly residential area



## Main Characteristics

PLOT AREA: **535m<sup>2</sup>**

USE: **Residential**


FRONTAGE: **Corner**

BUILDING COEFFICIENT: **90%**

TITLE DEEDS: 

**See on map** 



 22452000 / 99403664

 [INFO@PHOTIADESHOMES.COM](mailto:INFO@PHOTIADESHOMES.COM)

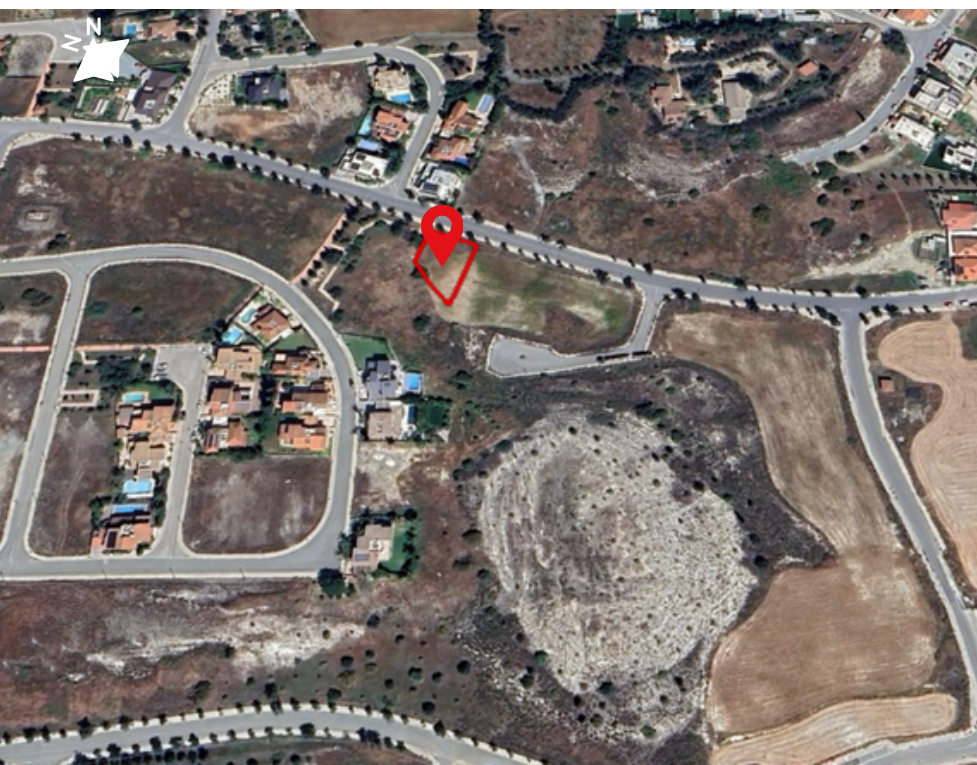


PROPERTY  
FOR SALE

For Sale  
€198,000 +VAT

Carolina Park - Nicosia  
Plot 474

This plot of land, located in the area of Carolina Park, offers a unique opportunity for development. It is ideal for building a custom home. Carolina Park area offers green parks, pedestrian walkways and the serenity of a truly residential area



## Main Characteristics

PLOT AREA: **657m<sup>2</sup>**

USE: **Residential**

FRONTAGE: **23,21**

BUILDING COEFFICIENT: **90%**

TITLE DEEDS: 

[See on map](#) 



Photos  
Photiades  
Homes

Value for Life

 22452000 / 99403664

 [INFO@PHOTIADESHOMES.COM](mailto:INFO@PHOTIADESHOMES.COM)



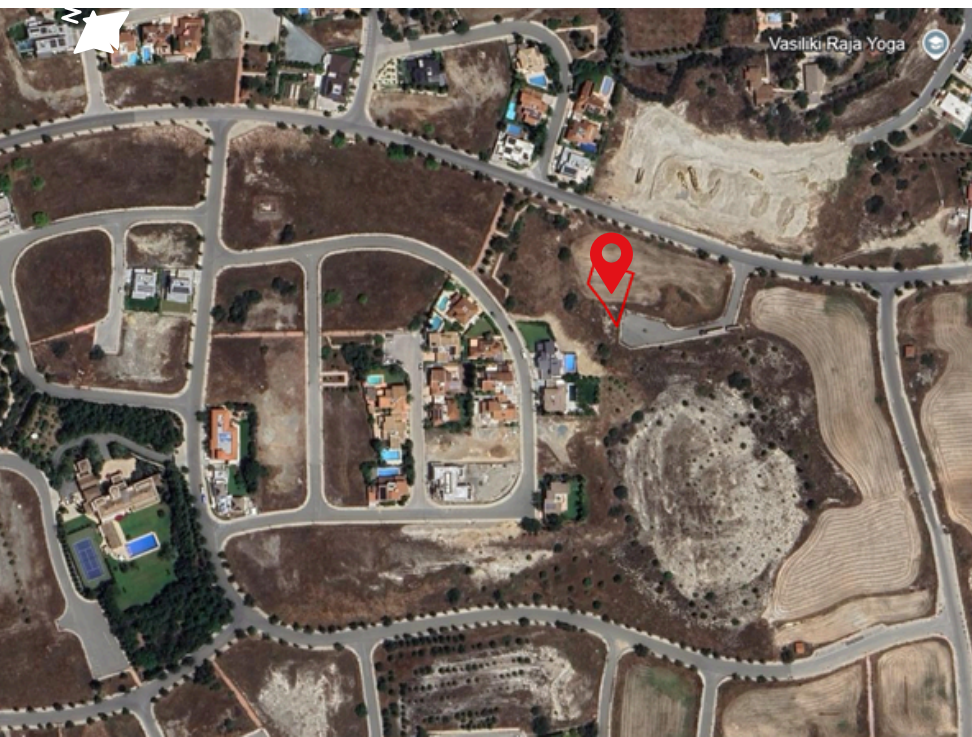
For Sale

€144,000 +VAT

Carolina Park - Nicosia

Plot 475

This plot of land, located in the area of Carolina Park, offers a unique opportunity for development. It is ideal for building a custom home. Carolina Park area offers green parks, pedestrian walkways and the serenity of a truly residential area



## Main Characteristics

PLOT AREA: **554m<sup>2</sup>**

USE: **Residential**

FRONTAGE: **9,3**

BUILDING COEFFICIENT: **90%**


TITLE DEEDS: 

**See on map** 



Photos  
Photiades  
Homes

Value for Life

 22452000 / 99403664

 [INFO@PHOTIADESHOMES.COM](mailto:INFO@PHOTIADESHOMES.COM)



For Sale  
€158,000 +VAT

Carolina Park - Nicosia  
Plot 476

This plot of land, located in the area of Carolina Park, offers a unique opportunity for development. It is ideal for building a custom home. Carolina Park area offers green parks, pedestrian walkways and the serenity of a truly residential area



## Main Characteristics

PLOT AREA: **536m<sup>2</sup>**

USE: **Residential**

FRONTAGE: **24,41**

BUILDING COEFFICIENT: **90%**


TITLE DEEDS: 

[See on map](#) 



Photos  
Photiades  
Homes

Value for Life

 22452000 / 99403664

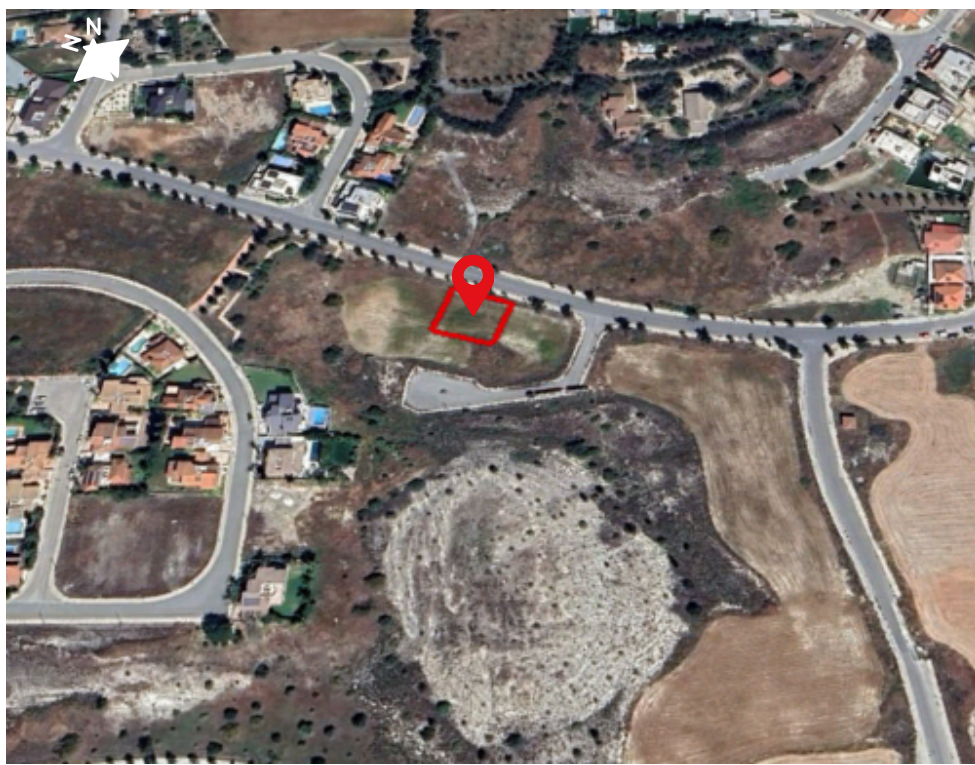
 [INFO@PHOTIADESHOMES.COM](mailto:INFO@PHOTIADESHOMES.COM)



For Sale  
€177,000 +VAT

Carolina Park - Nicosia  
Plot 477

This plot of land, located in the area of Carolina Park, offers a unique opportunity for development. It is ideal for building a custom home. Carolina Park area offers green parks, pedestrian walkways and the serenity of a truly residential area



## Main Characteristics

PLOT AREA: **599m<sup>2</sup>**

USE: **Residential**


FRONTAGE: **25,92**

BUILDING COEFFICIENT: **90%**

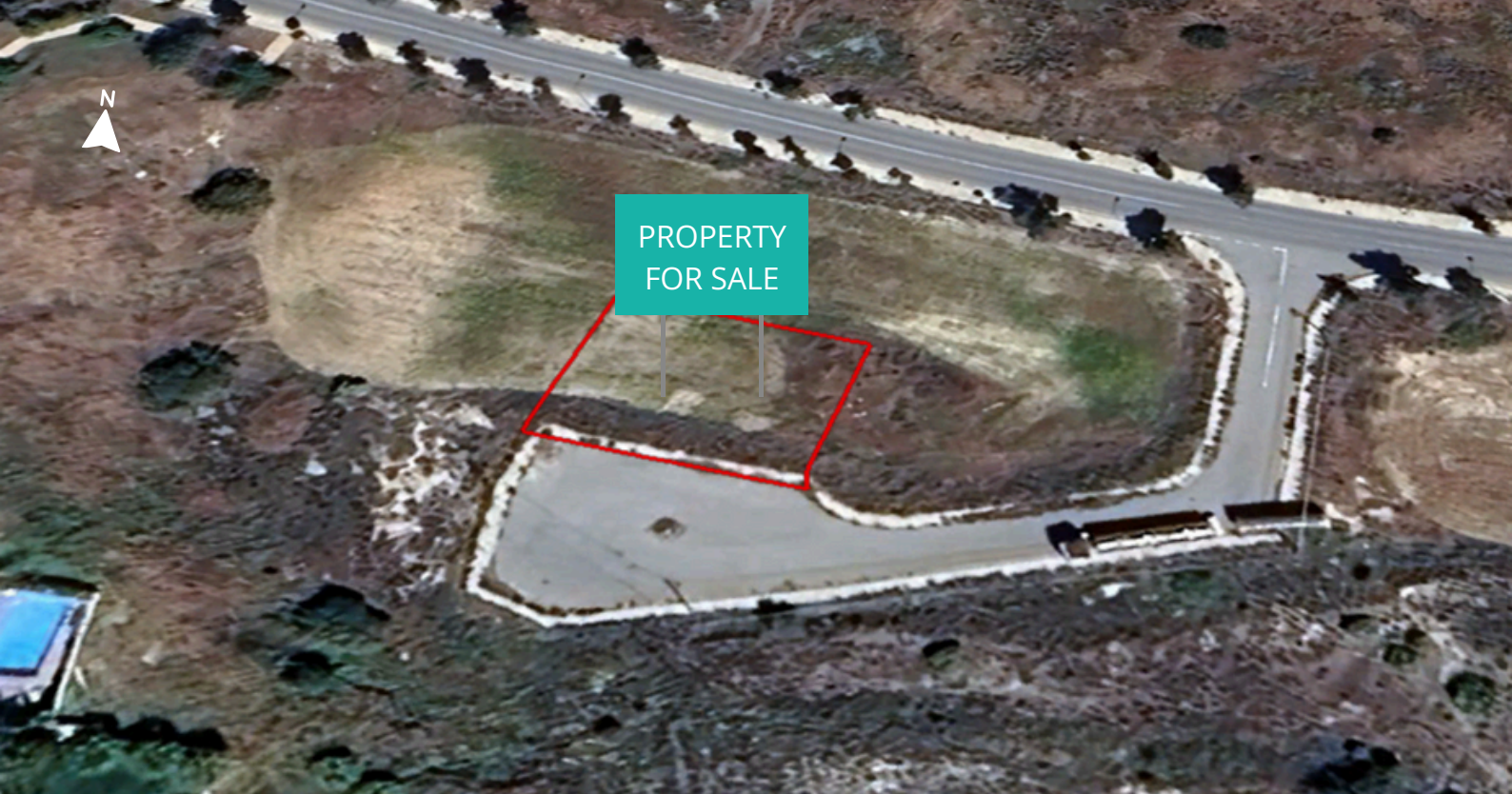
TITLE DEEDS: 

**See on map** 



 22452000 / 99403664

 [INFO@PHOTIADESHOMES.COM](mailto:INFO@PHOTIADESHOMES.COM)



For Sale  
€164,000 +VAT

Carolina Park - Nicosia  
Plot 478

This plot of land, located in the area of Carolina Park, offers a unique opportunity for development. It is ideal for building a custom home. Carolina Park area offers green parks, pedestrian walkways and the serenity of a truly residential area



## Main Characteristics

PLOT AREA: **555m<sup>2</sup>**

USE: **Residential**

FRONTAGE: **26,96**

BUILDING COEFFICIENT: **90%**


TITLE DEEDS: 

**See on map** 



Photos  
Photiades  
Homes

Value for Life

 22452000 / 99403664

 [INFO@PHOTIADESHOMES.COM](mailto:INFO@PHOTIADESHOMES.COM)



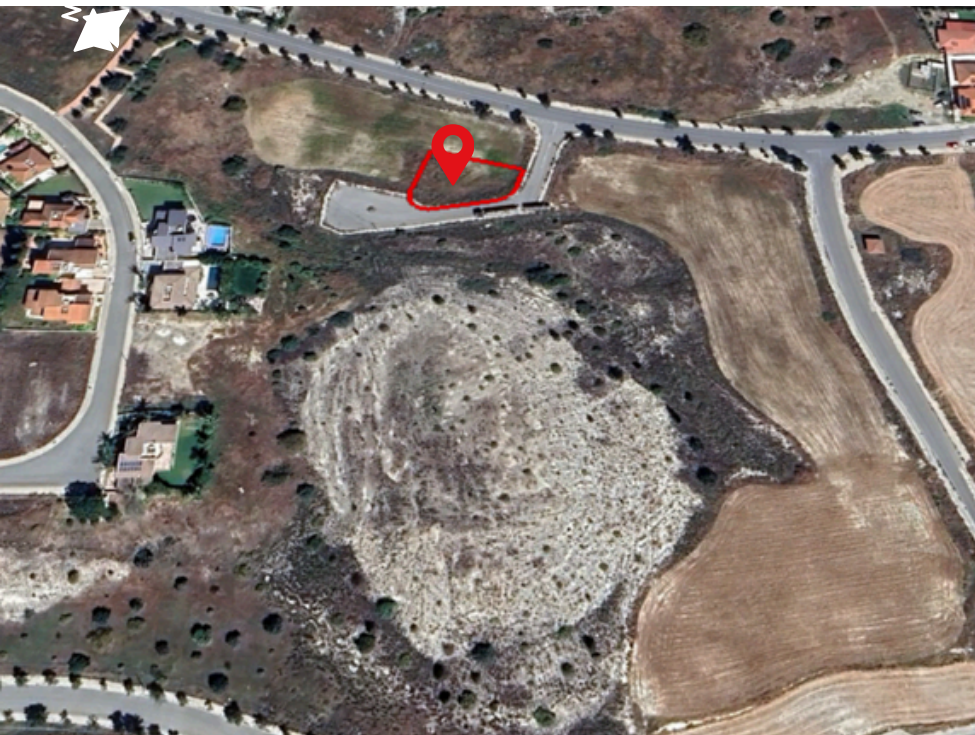
For Sale

€208,000 +VAT

Carolina Park - Nicosia

Plot 479

This plot of land, located in the area of Carolina Park, offers a unique opportunity for development. It is ideal for building a custom home. Carolina Park area offers green parks, pedestrian walkways and the serenity of a truly residential area



## Main Characteristics

PLOT AREA: **681m<sup>2</sup>**

USE: **Residential**

FRONTAGE: **Corner**

BUILDING COEFFICIENT: **90%**


TITLE DEEDS: 

**See on map** 

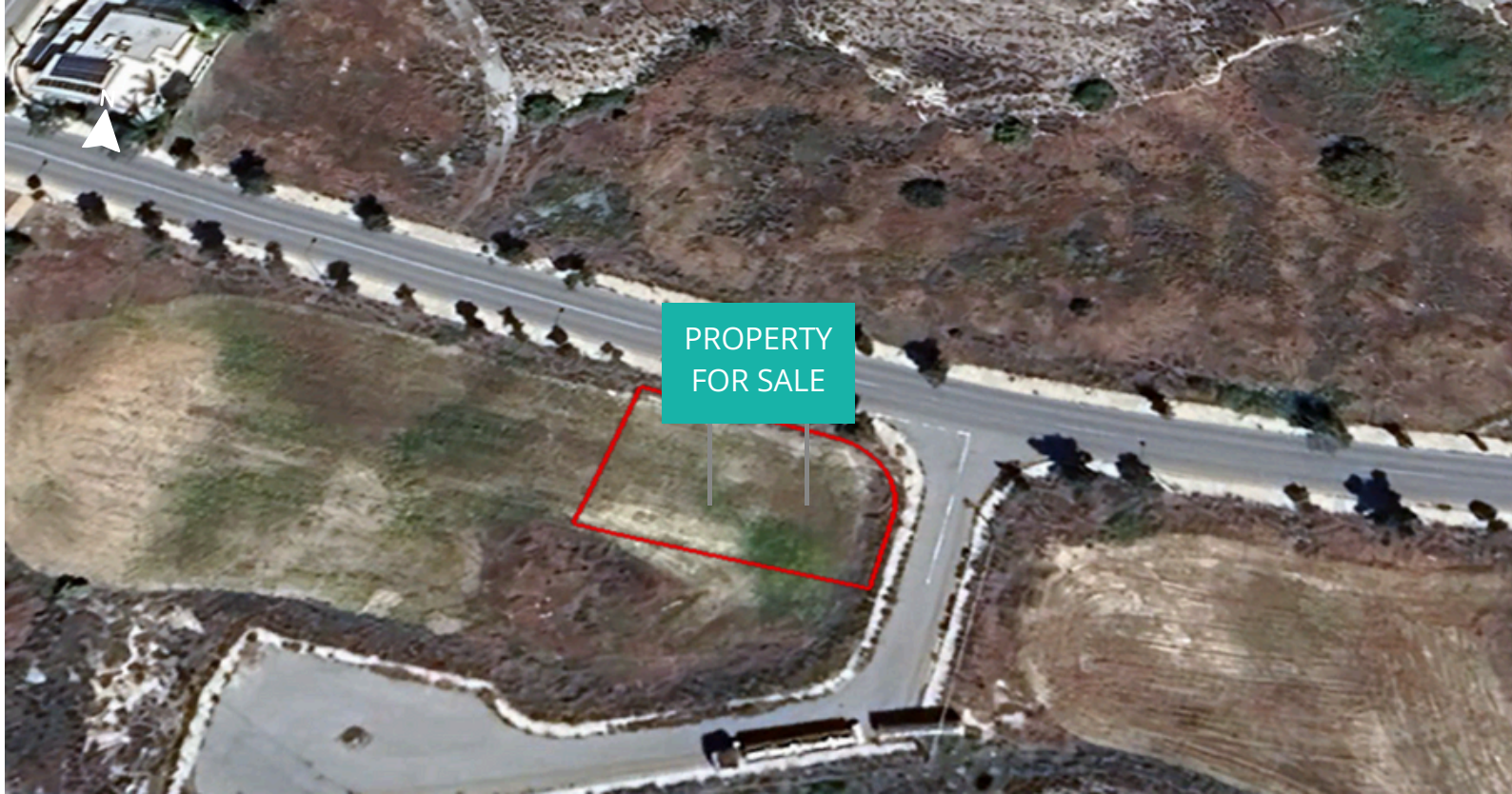


Photos  
Photiades  
Homes

Value for Life

 22452000 / 99403664

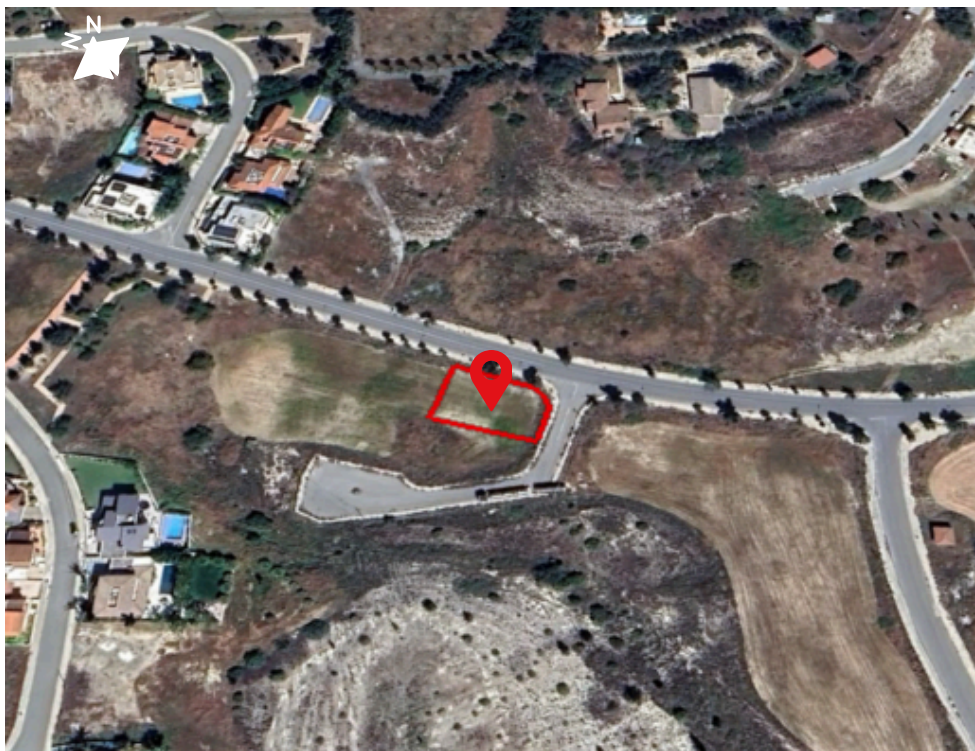
 [INFO@PHOTIADESHOMES.COM](mailto:INFO@PHOTIADESHOMES.COM)



For Sale  
€179,000 +VAT

Carolina Park - Nicosia  
Plot 480

This plot of land, located in the area of Carolina Park, offers a unique opportunity for development. It is ideal for building a custom home. Carolina Park area offers green parks, pedestrian walkways and the serenity of a truly residential area



## Main Characteristics

PLOT AREA: **587m<sup>2</sup>**

USE: **Residential**

FRONTAGE: **Corner**

BUILDING COEFFICIENT: **90%**


TITLE DEEDS: 

[See on map](#) 

  
Photos  
Photiades  
Homes  

---

Value for Life

 22452000 / 99403664

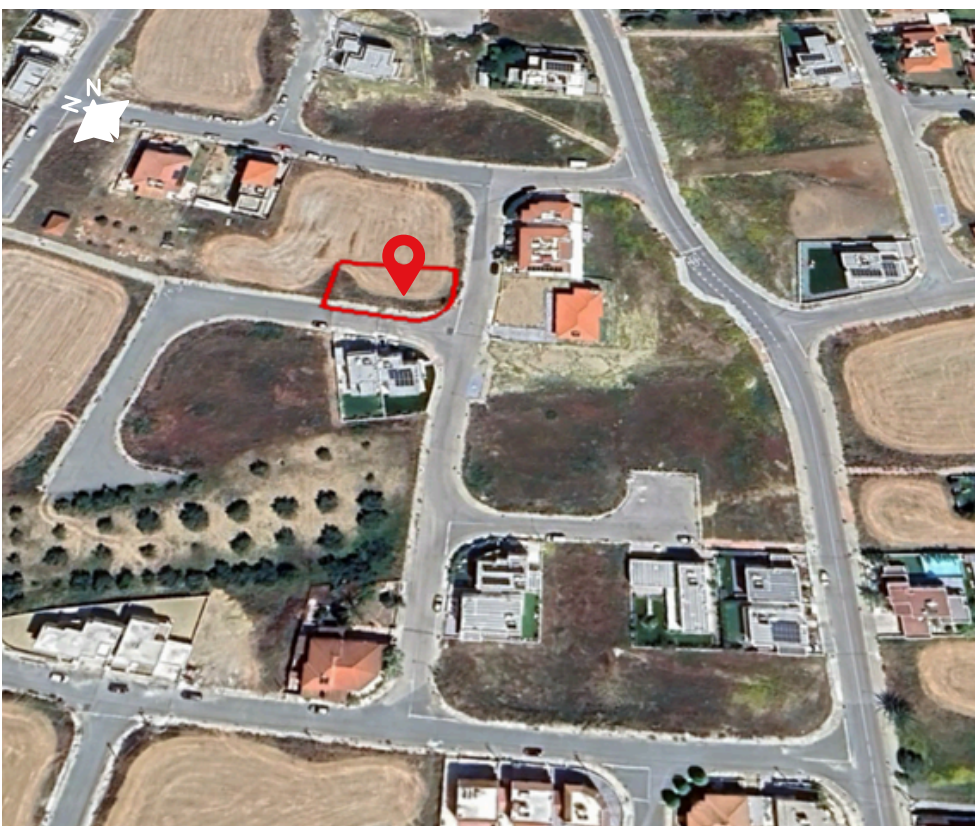
 INFO@PHOTIADESHOMES.COM



For Sale  
€140,000 +VAT

Ilioupoli - Nicosia  
Plot 2809

This plot of land, located in the area of Ilioupoli, offers a unique opportunity for development. It is ideal for building a custom home.



## Main Characteristics

PLOT AREA: **539m<sup>2</sup>**

USE: **Residential**

FRONTAGE: **Corner**

BUILDING COEFFICIENT: **90%**

TITLE DEEDS: 

[See on map](#) 



Photos  
Photiades  
Homes

Value for Life

 22452000 / 99403664

 [INFO@PHOTIADESHOMES.COM](mailto:INFO@PHOTIADESHOMES.COM)



For Sale  
€143,000 +VAT

Kallithea - Nicosia  
Plot 3171

This plot of land, located in the area of Kallithea, offers a unique opportunity for development. It is ideal for building a custom home.



## Main Characteristics

PLOT AREA: **579m<sup>2</sup>**

USE: **Residential**


FRONTAGE: **20,5**

BUILDING COEFFICIENT: **90%**

TITLE DEEDS: 

**See on map** 



 22452000 / 99403664

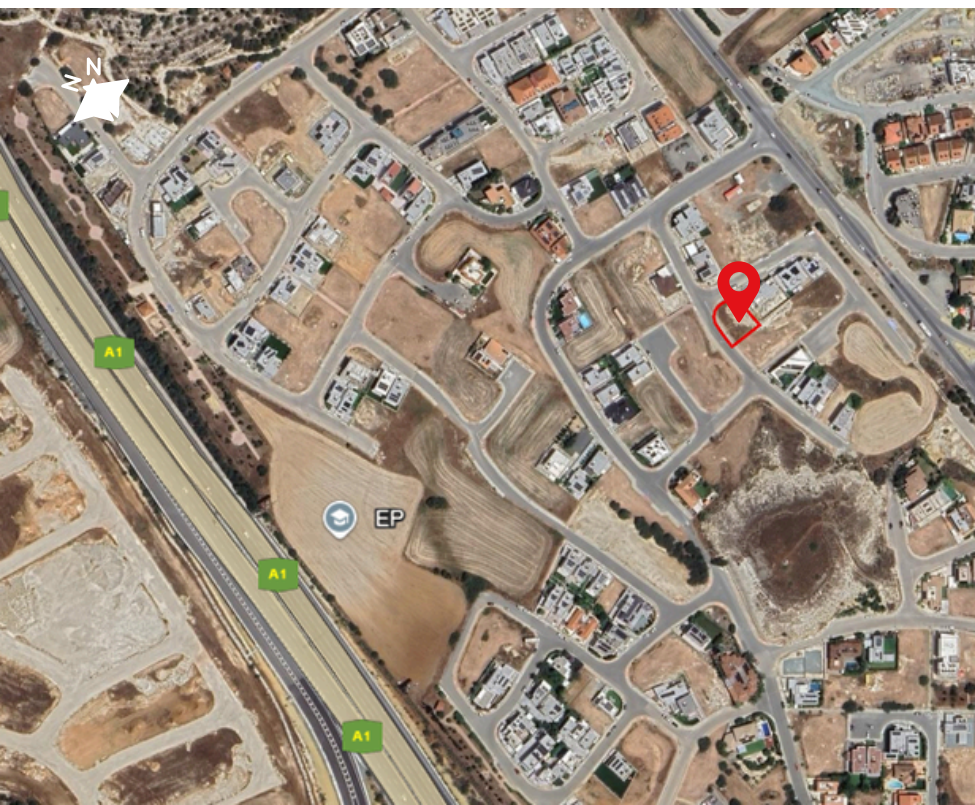
 [INFO@PHOTIADESHOMES.COM](mailto:INFO@PHOTIADESHOMES.COM)



For Sale  
€148,000 +VAT

Kallithea - Nicosia  
Plot 3174

This plot of land, located in the area of Kallithea, offers a unique opportunity for development. It is ideal for building a custom home.



## Main Characteristics

PLOT AREA: **574m<sup>2</sup>**

USE: **Residential**

FRONTAGE: **Corner**

BUILDING COEFFICIENT: **90%**

TITLE DEEDS: 

[See on map](#) 



 22452000 / 99403664

 [INFO@PHOTIADESHOMES.COM](mailto:INFO@PHOTIADESHOMES.COM)



For Sale  
€154,000 +VAT

Kallithea - Nicosia  
Plot 3179

This plot of land, located in the area of Kallithea, offers a unique opportunity for development. It is ideal for building a custom home.



## Main Characteristics

PLOT AREA: **598m<sup>2</sup>**

USE: **Residential**

FRONTAGE: **Corner**

BUILDING COEFFICIENT: **90%**

TITLE DEEDS: 

**See on map** 



 22452000 / 99403664

 [INFO@PHOTIADESHOMES.COM](mailto:INFO@PHOTIADESHOMES.COM)